



# ZNF.X

Fluorescent Lamp  
LED Tube



**ZONE 1-2 / 21-22**

**IP 66**

**$-20\text{ }^{\circ}\text{C} < T_a < +55\text{ }^{\circ}\text{C}$**

**Emergency Kit**

## Product

## Certification

## Marking

## IP

## Ambiant Temp.

## Standarts

## Cable Entries

## Body

## Difusser

## Gaskets

## Paint

## Circuit

## Rated Voltage

## Frequency

## Application

Aluminium Body Fluorescent or Led Tube Lighting Fixtures

SCA 19 ATEX 015X

II 2G Ex db IIB T6 Gb

II 2D Ex tb IIIC T85°C Db

IP 66

-20 °C up to +40 °C

EN60079-0: 2018; EN60079-1: 2014; EN60079-31: 2014

2x 1/2"

Low Cooper Aluminium Alloy

Shock and high temperature resistant polycarbonate tube

NBR oring on cover and high temp. res. silicone

Electrostatic Powder Coat

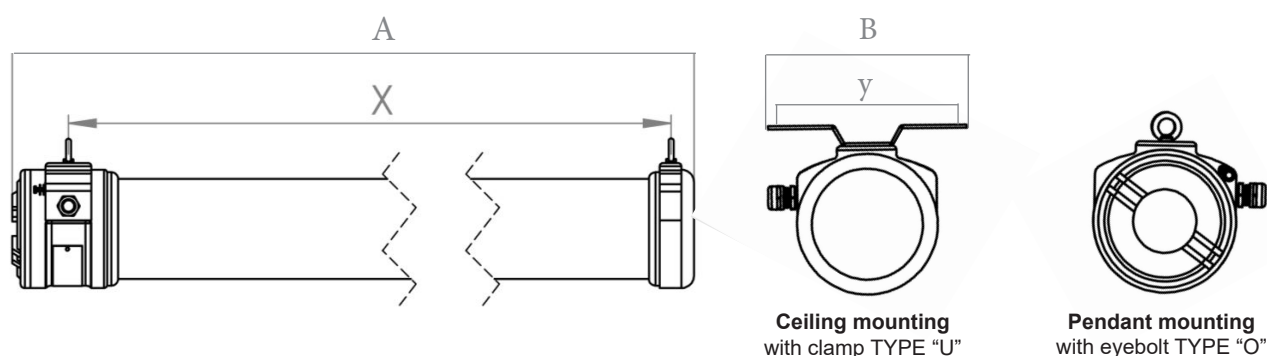
Electronic Ballast, T8 lampholder.

220/240V

50/60 Hz

Oil refineries, Chemical and petrochemical plants, Boiler rooms etc.

## DIMENSIONAL DRAWING

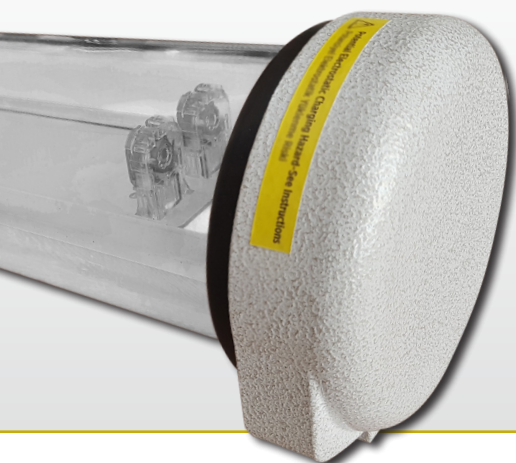


	A	B	C	x	y	weight (kg)
ZNF 2X36	1320	210	142		186	10,5
ZNF 2X36EM	1320	210	142		186	10,8
ZNF 2X18L	1320	210	142		186	10,1
ZNF 2X18	820	210	142		186	6,5
ZNF 2X18EM	820	210	142		186	6,8
ZNF2X9L	820	210	142		186	6,1

# ZNF.2X

36W  
18W  
9W

**Empty** for fluorescent  
**EM** for emergency kit  
**L** for Led Tube



ZNF.X SERIES type fluorescent lamp comprises a lamp tube assembly with two end caps. The housing consists of a transparent polycarbonate tube with aluminium end caps. The electronics are located within the flameproof enclosure. Tube and end caps sealed with cemented joint. Both end caps connected together by two 6 mm diameter tie bars, therefore compressing the tube and cemented joints between caps. The equipment is intended for fixed installation. The equipment has normal fluorescent lamp, led fluorescent lamp and emergency kit variations.

